

Fishing

Mary Valley Country

Come out to play in Mary Valley Country in Queensland and experience the excitement of fishing in its freshwater dam and waterways.

With its proximity to Brisbane, less than two hours' drive, the Mary Valley offers a variety of freshwater fishing experiences for keen lure and fly anglers.

Mary Valley Country fish are plentiful and aggressive so you'll have a fight on your hands if you hook one.

Go lure or fly fishing for the acrobatic Saratoga and the feisty Bass on the calm waters of Borumba Dam. You'll be able to fish any time of day in the surrounding ranges. Look for the Saratoga in the warmer sunny spots and cast your lines in the rainforest shaded structures favoured by the Bass.

Experience the serenity of floating down Yabba Creek or the Mary River in your canoe. If the fish aren't biting you can simply take in the abundant wildlife from Azure Kingfishers to playful platypuses.



Before you start fishing why not drop in a few yabby pots for a feed of Red Claw yabbies. These tasty yabbies abound in Borumba Dam.

Our local experts are waiting to give you advice and provide any last minute fishing supplies.

Please note these protected species:

Mary River Cod are totally protected in the entire Mary River Catchment. This includes Borumba Dam and Yabba Creek.

If you should catch one of these precious fish, please look after them and release as quickly and gently as possible.

You may also catch a glimpse of the endangered Queensland Lung Fish. This is also a no take species, and if caught it must be handled with care and released immediately. Commonly caught in the Mary River system and impoundments.

What will you catch?

Australian Bass: Caught on diving lures, spinner baits, surface poppers. Best baits: Worm, shrimp. Found throughout south-east waterways in all impoundments. Targeted areas: Around and amongst underwater structure overhanging branches and along rocky ledges. An aggressive and hard fighting fish. Size limit 30cm min, bag limit 2.

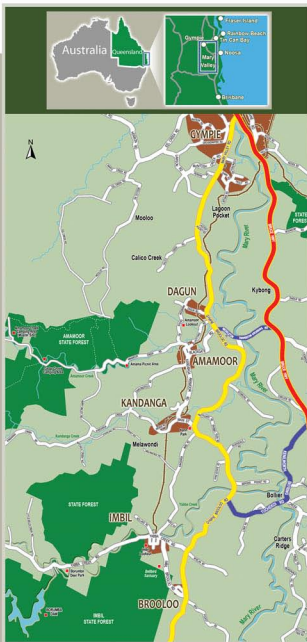
Yellow Belly/Golden Perch: Caught on deep diving lures and spinner baits. Best baits: Worm, shrimp. Found in most waterways and impoundments in the southeast. Targeted areas: Deep waterholes, underwater structure and rocky ledges.

Silver Perch: Caught on small diving lures and spinner baits. Best baits: Worm, shrimp. Found in most waterways and impoundments in the southeast. Targeted areas: Deep waterholes, underwater structure and rocky ledges. Size limit 30cm min, bag limit 5.

Spangled Perch: Caught on small diving lures and spinner baits. Best baits: Worm, shrimp. Found in waterways and impoundments in the southeast. Targeted areas: Deep and shallow sections of creeks and waterholes, underwater structure, rocky ledges, weed banks. No size limit, bag limit 20.

Southern Saratoga: Caught on surface poppers and fly, shallow diving lures and spinner baits. Best baits: Shrimp, worms. Found mostly in Lake Borumba. Targeted areas: Just under the surface around lily pads, weed beds and structure on or just above the water. A very aggressive and acrobatical fish when hooked. Great for sport fishermen. Size limit 50cm min, bag limit 1.

Once you've discovered the variety of outdoor experiences that Mary Valley Country offers, you'll want to keep coming back to refresh yourself and connect with friends and loved ones.



You might also catch:

Eel Tailed Cat Fish: Caught on bait more so than lures. Best baits are shrimp and worms. Found in all southeast impoundments and waterways. Targeted areas are on or close to the bottom of waterholes. (Beware of 3 spikes found in the petrel & dorsal fin.)

Forked Tail Cat Fish: Predominantly caught on bait but do take diving lures. Best bait's are shrimp and worms. Found in all southeast waterways not so common in impoundments. Targeted areas are on or close to the bottom of waterholes. (Beware of 3 spikes found in the petrel and dorsal fin.)

Red Claw: Caught in most shrimp and opera house traps. Best baits vary from stone fruit, meat, and fish frames. Found in most impoundments in the South East. Targeted areas on the bottom close to weed beds or rocky out crops. No size or bag limit.

Fresh Water Shrimp: Caught in fine meshed shrimp traps. Best baits are fish frames and meat. Common in all waterways and impoundments in the south east. Targeted areas are on the bottom in shallow water close to weed beds undercut banks and rocky outcrops. (Fantastic bait especially if kept live.)

What you need:

A Stocked Impoundment Permit is required to fish at Borumba Dam. On your way to the dam, drop into Borumba Fishing and Outdoors or the Imbil Friendly Grocer for a permit.

The money raised through the permits is used to restock the waterways, and means that there are always plenty of fish for you to catch.

No boating permits are required and there is no size limit on boats or motors. Bass cannot be taken during spawning in creeks and rivers only - from June 1-August 31.

To find out more Freecall 1800 444222
Visit www.maryvalleycountry.com.au
or www.maryvalley.org

This publication was produced by the marketing committee, Mary Valley Inc, and Gympie Cooloola Tourism.

Where to stay - Camping

Borumba Dam Camping 5488 6662
Borumba Deer Park 5484 5196
www.borumbadeerpark.com
Crystal Waters Eco Park 5494 4550
www.crystalwaters.net.au
Glenoak Farm @ Kenilworth 5446 0628
www.glenoak-farm.com
Island Reach Camping Resort 5484 5247
www.ircamping.com.au
Kenilworth Homestead 5446 0555
www.kenilworthhomestead.com.au
Queensland national parks
www.derm.qld.gov.au/parks

Where to stay - Accommodation

Amamoor Homestead B&B & Cabins 5484 3760
www.amamoorhomestead.com.au
Amamoor Lodge B&B 5484 3500
www.amamoorlodge.com.au
Another Time Another Place B&B & Cabins
5472 3134 www.anothertimeanotherplace.com.au
Brooloo Park Eco Retreat 5488 6610
www.brooloo.com.au
Cabins By The Creek 5484 5217
www.cabinsbythecreek.com.au
Cooldinda Cottage on Glenoak Farm 5446 0628
www.glenoak-farm.com
Eco Retreat "Waterbreath" 5494 4650
www.waterbreath.com
Imbil Motel 5484 5191
Lagoon Pocket B&B 5483 2112
www.lagoonpocket.com
Imbil secluded retreat motorhome 5488 6415
www.imbilsecludedretreat.com
Mary Valley Vista 0458 564313
www.maryvalleyvista.com.au
Melawondl Spring Retreat 0408 736 223
www.melawondspringretreat.com.au
Mullangong 5484 3043
mullangong@hotmail.com
Patchwork Cottage 5488 6000
Rosevale House B&B 5488 6770
www.rosevalehouse.com.au
Yabbalumba Retreat 5446 0787
www.yabbalumbaretreat.com.au

come out to play

This is one of six info sheets showcasing great ways to play in the Mary Valley.
Check out the facts on camping, horse riding, four-wheel-driving, bushwalking & mountain biking.